

Craftstone

Bespoke Architectural Cast Stone Products

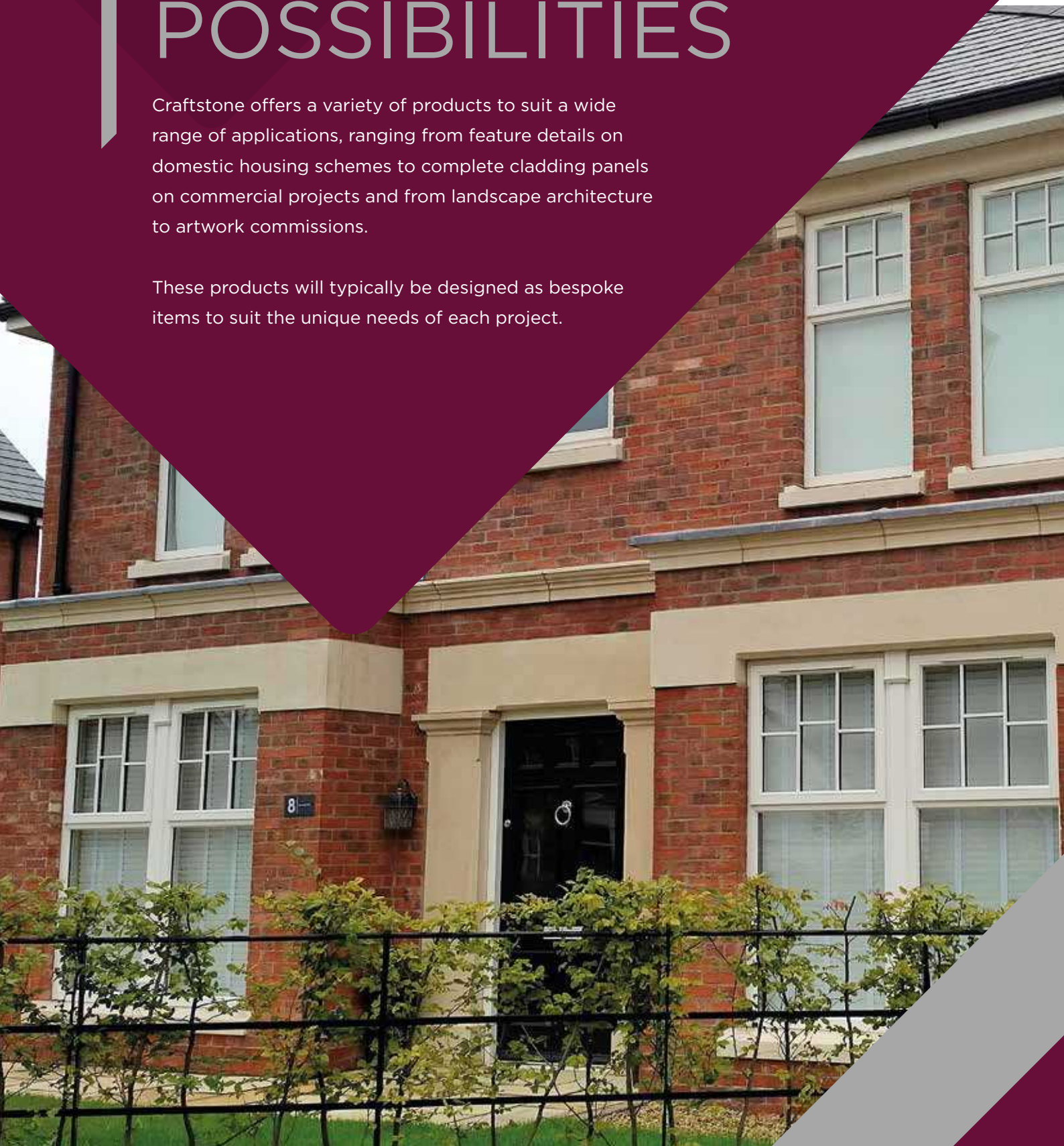
MANUFACTURERS OF BESPOKE
ARCHITECTURAL CAST STONE
& CRYSTAL PRODUCTS



DISCOVER ENDLESS POSSIBILITIES

Craftstone offers a variety of products to suit a wide range of applications, ranging from feature details on domestic housing schemes to complete cladding panels on commercial projects and from landscape architecture to artwork commissions.

These products will typically be designed as bespoke items to suit the unique needs of each project.



CONTENTS

- 5 About Craftstone
- 6 - 15 Commercial Projects
- 16 - 21 Residential Dwelling Projects
- 22 - 27 Residential Apartment Projects
- 28 - 33 Landscape Projects





ABOUT US

Craftstone was the first company in Ireland to manufacture reconstituted stone and has vast experience in the production of bespoke and standard architectural cast stone products.

For almost 35 years Craftstone has been leading the way through product innovation and has built up a reputation for providing high-quality products combined with excellent service. CrystalPave, made from recycled glass and resin, is the most recent addition to Craftstone's product range, complementing the introduction of a range of bespoke landscape products.

Based in a 30,000 sq ft purpose-built factory, product quality is ensured through the application of the requirements of ISO 9001 Quality Standard. Each project is given the same individual attention, whether it's a one-off private dwelling or a large commercial development. Craftstone's in-house design & drawing service using the latest technology enables the team to work closely with clients to achieve the required end result.



COMMERCIAL PROJECTS

Craftstone is very proud to have delivered a range of innovative commercial projects through the UK & Ireland. Working closely with its clients from initial concept to completion, the team will be there every step of the way to ensure a best in class result.



ST. ANNES SQUARE

As the site is in a conservation area, it was important that the design was stylish and elegant and in sympathy with the architecture of St. Anne's Cathedral, Belfast. To this end, Craftstone was contracted to supply and build architectural cast stone in a Portland stone finish and included columns, pilasters, lintels, entablatures and cornices.

The completed project has won the Northern Ireland Residential Development of the Year title, the Best City Regeneration Project for design excellence, innovation and sustainability and was also named winner of the Regeneration category in the 2010 RICS Northern Ireland awards for excellence in the built environment. A tribute to all those involved working in close partnership to achieve a truly exceptional development.



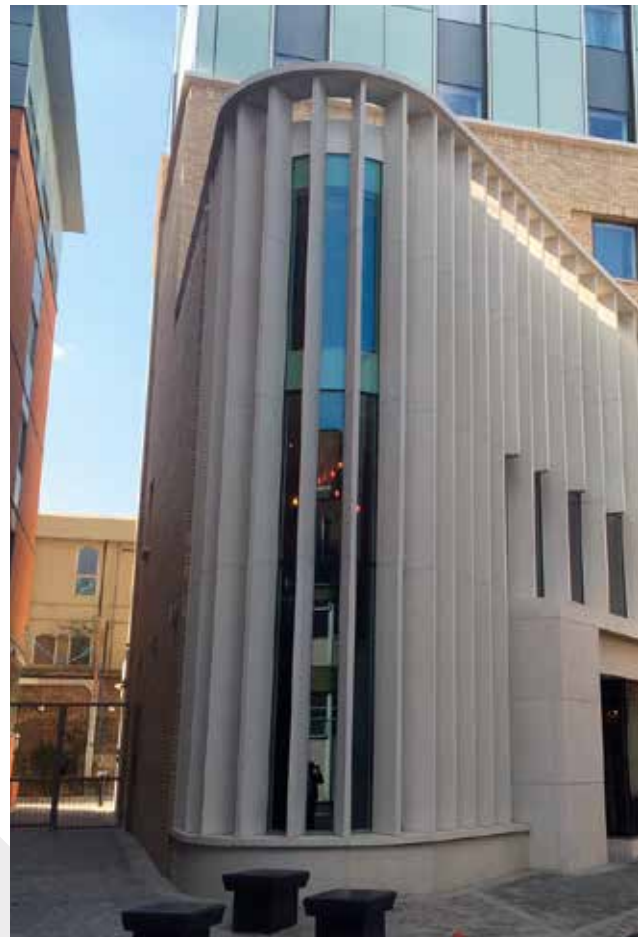
BOROUGH HIGH STREET

The Borough High Street Hotel scheme comprises a 100-room hotel, three retail units and a gym for the students of King's College London.

The site is in a prominent location in the developing London Bridge Quarter. The scheme will regenerate the currently vacant site on Borough High Street and provide a vibrant public space within the historic grain of Southwark's characterful 'yards'.

The building references the Burgage plots of Southwark's past and proposes a re-introduction of the historic public spaces within the site. The resultant proposal is a contemporary piece of architecture which engages with the history of the site, making a significant contribution to the regeneration of the London Bridge area.

Craftstone supplied Reconstituted Portland stone elements, including the impressive hotel entrance cladding, structural fins & board marked precast panels.



TOMMY MAKEM ARTS & COMMUNITY CENTRE

A modern, multi-purpose facility which commemorates the life and times of the internationally-celebrated Irish folk musician. The state-of-the-art project comprises a spacious, multi-functional hall with additional flexible rooms and spaces available for use by the whole community, including a studio, an outdoor play area, an exhibition centre and fully equipped kitchens. Costing £2.5M, it was officially opened by Irish President Michael D. Higgins.

Located in Keady, Co. Armagh, the project features Craftstone's Reconstituted Portland stone wall cladding, column claddings & structural cast-stone beams spanning between the piers.



DOWNSHIRE ROAD HOLYWOOD

Prestigious 'New York' styled office development located in the heart of Hollywood, Co Down which is the head office for Wirefox.

The project features Craftstone's Architectural pre-cast structural columns & beams at ground floor with matching cast-stone (wet cast) sills and lintols on the 1st & 2nd floors. As a prestigious leading Property Development & Investment company, it was important to Wirefox that they had an iconic flagship Head Office to showcase their real estate ethos and expertise. Craftstone is very proud to have been a partner working with Wirefox to deliver these objectives.



ST. GEORGES CHURCH BRENTFORD

A spectacular modern apartment development finished to an exceptional standard in one of Brentford's most exciting new gated developments.

St George's Church is one of Brentford's most exciting new gated developments, comprising twenty stylish apartments within an elegant church building in a popular waterfront location. This charming conversion has maintained many of the church's original features while incorporating modern facilities.

The project featured Craftstone's reconstituted Buff sandstone (wet cast) string courses, copings & large window surrounds,

Craftstone was approached by the architect to help with the complex design of introducing new cast stone features into this refurbishment project.



DOONBEG GOLF CLUB

The developers chose a natural random stone cladding for the main building and wanted architectural precast dressings that would complement the colours in the natural stone. The main contractor, John Paul Construction Ltd, contacted Craftstone who made a selection of samples for the client who chose Buff wet cast. Craftstone worked closely with the contractor and the architect to ensure on time delivery to the required specification. Elements supplied include sills, lintels, jambs, transoms, large one-piece units for bay windows, cornices, copings, chimney caps, main entrance surrounds and corbels. Even the clock has a Craftstone surround.

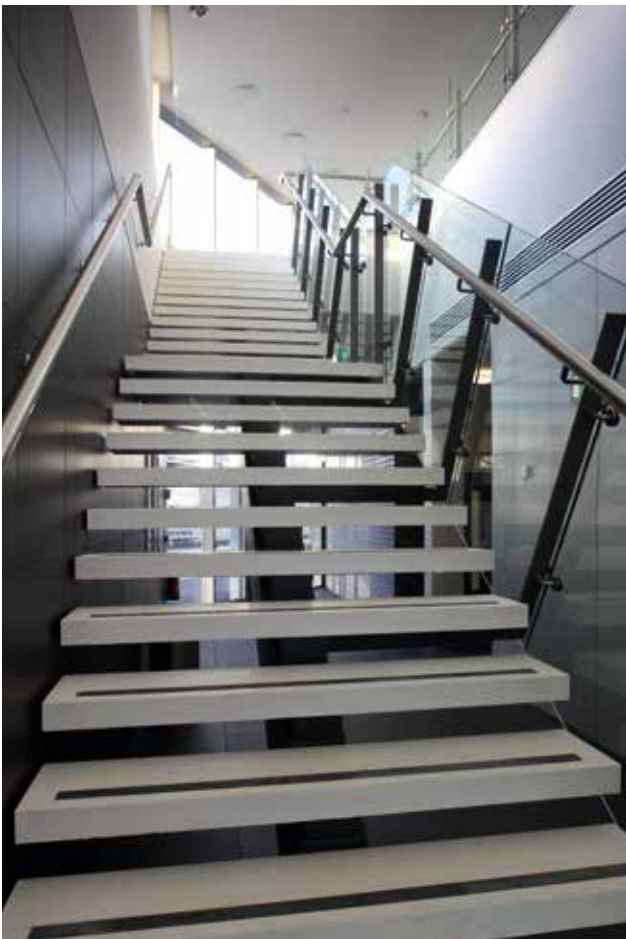
The finished project is an outstanding development in a stunning location with finishes which beautifully complement each other and at the same time blend in with the surrounding countryside.



NEWRY TRAIN STATION

Due to their proven track record in producing bespoke architectural precast solutions, Craftstone was chosen to develop and manufacture the precast concrete elements in a Portland finish. Large cladding panels were used on the exterior of the building and chunky sills at the windows inside the building provide additional seating for passengers.

Craftstone also manufactured richly detailed stair treads in a Portland finish with cast in black non slip strips made from resin bonded recycled glass. The finished staircases have the appearance of floating and the matching Portland finish of the stairs and the external waiting areas ensures a consistent palette of materials internally and externally.



SCOTWAY HOUSE GLASGOW

Scotway House built in 1885 was originally constructed to be a drawing office for Meadowside Shipyard and designed by Bruce & Hay architects.

The building was vacant for a number of years and deteriorated significantly. The roof was seriously compromised with a large portion at the south-west end missing virtually all of its slates exposing the felt and sarking boards below. A series of break-ins and arson attempts left the building in a sorry state. The building is category B listed.

Working with the key stakeholders, notably the Glasgow based Structured House Group (SHG), Graham Construction and guided by the Architects brief, Craftstone were able to replicate the original façade of the building which helped restore the building to its former state as an iconic landmark in the local environment.

This was a £40 million GDV project and was a significant investment for the city which brought more than 300 jobs and employed a number of local companies.

It was also the first in a series of projects planned by SHG as part of a £500m joint venture deal with a US company.



DCU DUBLIN

The Nano-Bioanalytical Research Facility (NRF) is located on the Dublin City University (DCU) Glasnevin Campus. The state of the art facility was funded under the Higher Education Authority Programme for Research in Third Level Institutions and established to address the needs of the research activities in Science and Engineering, both within and external to DCU.

Craftstone was requested to provide a solution for a light weight cladding that could be post fixed after the curtain walling. The result was Craftstone's GRC horizontal bands in a Portland finish.



RESIDENTIAL DWELLING PROJECTS

Craftstone recognises the importance of working with its clients to create the unique features they wish to embody in their homes to reflect a range of personal, family and local attributes, which give their residences a special sense of identity.



GOLDSMITH STREET, NORWICH

Goldsmith Street is comprised of almost 100 ultra low-energy homes for Norwich City Council. The result is the UK's largest social housing scheme to achieve 'Passivhaus' Certification.

Goldsmith Street is a ground-breaking project and an outstanding contribution to British architecture. The project features Craftstone's reconstituted Portland stone (west cast) sills and porch canopies

With seven terrace blocks arranged in four rows and bookended by three-storey flats, the design exploits angled sloping roofs to maximise daylight throughout the development and prioritises pedestrians over cars.



In addition to low fuel bills, a clear social focus was a priority for architects Mikhail Riches. In a bid to create community and limit isolation they were keen that front doors faced front doors, and looked to a traditional Victorian street model for inspiration. With cars pushed to the outer edges of the development more space is available for people to walk and for children to play safely.

The scheme was named the winner of the Royal Institute of British Architects (RIBA) Stirling Prize 2019, in a ceremony at London's Roundhouse. The estate, designed by Mikhail Riches, was described by the RIBA President as "a beacon of hope".

ADDRESS ROAD PORTADOWN

The brief to Paul McAlister, Architects, asked for an Irish country house that was large enough for future expansion and the house was originally designed with a traditional courtyard and garages. The client wished to build a house as authentic to the traditional Georgian or classical style as was possible.

What transpired was a close working relationship between client and architect where every detail and design decision was questioned in terms of its authenticity to the Neo-Georgian style of the dwelling. The scale and proportion of the drawings were analysed with 3D models and renderings to demonstrate how the final design would look when completed. The attention to classical detailing, both externally and internally, is exceptional throughout this house.



BLADON PARK BELFAST

Tucked away in the much sought-after leafy suburb of Malone, Bladon Park is an exclusive development that truly speaks for itself. From the tree-lined avenue leading up to the grounds, to the architecturally-designed homes themselves; Bladon Park is in a league of its own.

Consisting of five unique detached properties with private landscaped gardens, Bladon Park is a prestigious collection of luxury homes, characterised by spacious, contemporary interiors and classically-designed exteriors, finished to the highest specification for relaxed, everyday living.

Craftstone supplied the Reconstituted Bathstone (Wet Cast) architectural features. All cast stone lintols were used as structural elements of the build.



ANNA HOUSE, LONDON

After providing a number of samples for approval, Craftstone was chosen to manufacture and supply Portland cast stone blocks, sills, parapet copings and wall copings.

This was a well thought out and creative design by the architect and the clean lines of the cast stone exterior supplied by Craftstone emphasises the modernist concept of the project.



BELVOIR PARK BELFAST

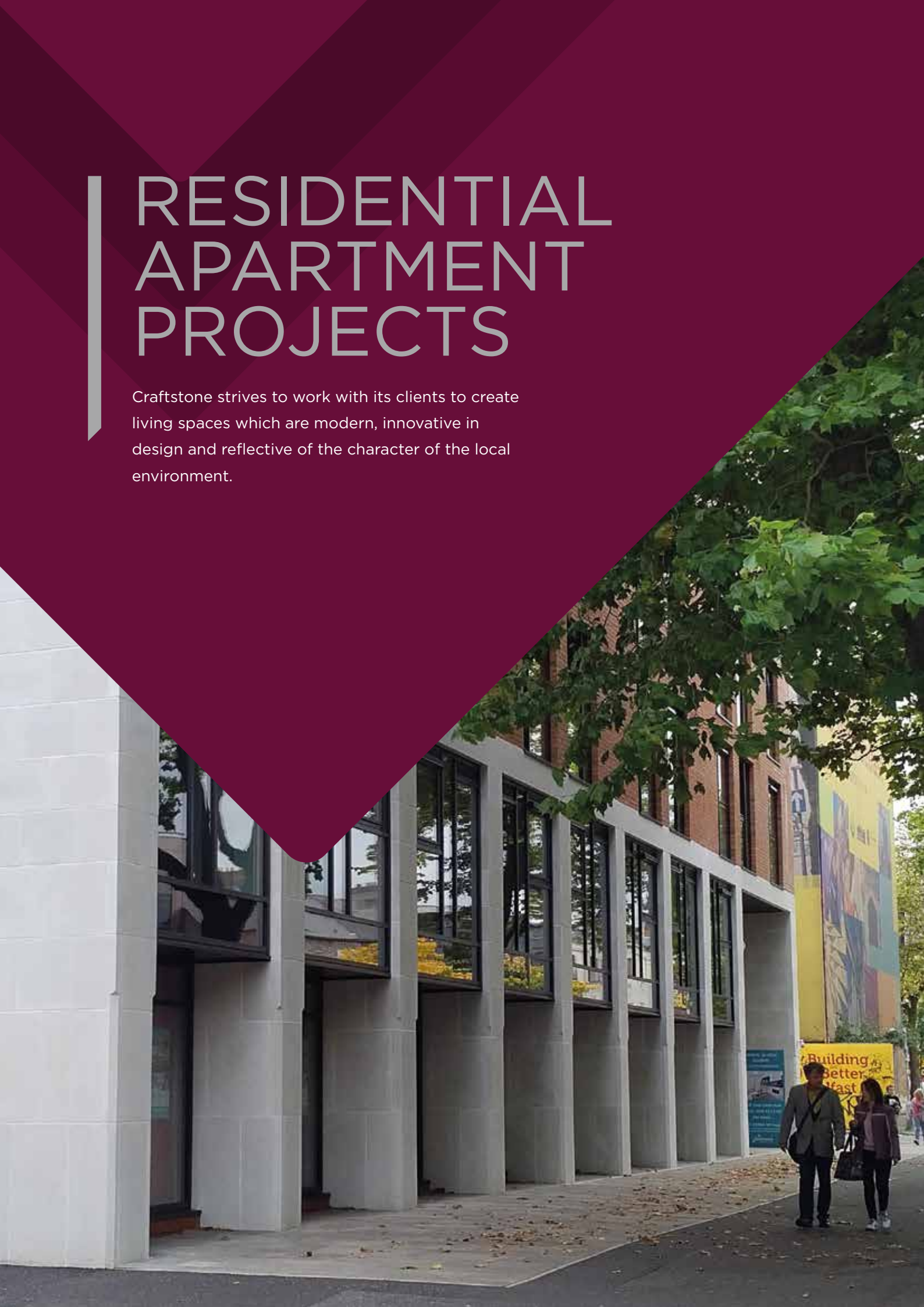
Offering a choice of detached and semi-detached homes, town houses and apartments, this exceptional development is architecturally influenced by the magnificent Belvoir Park hospital that will be sympathetically restored and converted for modern living as part of the overall scheme.

And it is this unique combination of architectural heritage and natural country park setting that will make this one of the most sought after addresses in Northern Ireland and one of the most exceptional places to call home.



RESIDENTIAL APARTMENT PROJECTS

Craftstone strives to work with its clients to create living spaces which are modern, innovative in design and reflective of the character of the local environment.



GAINS福德 ROAD

This completed project provides affordable homes for first time buyers in Walthamstow with Pocket Living. Located on a residential terraced street and close to the town centre, the development sensitively responds to the massing of adjacent buildings. The layout is efficient and functional, whilst promoting a sense of community through shared amenities. The design builds upon the existing character of the surrounding area, taking inspiration from the legacy of the William Morris School that previously occupied the site and from the Warner Houses that are particular to Walthamstow.

The project features Craftstone's architectural bespoke red precast copings, structural lintols & cladding with a main feature of a rooftop Belvedere consisting of structural columns and roof slabs all designed & detailed by Craftstone.



MUSWELL HILL LONDON

The steeply stepping residential buildings follow the contours of the land, broken up in an alternating pattern of brick and glazed elements. Each of the six large family homes and 22 apartments is defined by golden-lined bays of varying tones.

The new Centre is part refurbishment of an existing building and part new-build extension. The proportions of the extension match that of its neighbour and it is arranged in bays that open up views for the teaching areas and provide break-out spaces.

Craftstone was approached by the architect to help with the design of the cast stone features on the project. The result was Craftstone reconstituted Portland spandrel panels used as structural and as an architectural feature.



GRAND CANAL APARTMENTS, LONDON

Built from traditional methods of construction including a mix of reconstituted stone, Metsec, Alucobond, glazing, curtain walling and a green and brown roof.

Craftstone supplied the reconstituted panels that appear at each level. Cost savings were achieved when Craftstone modified the design, allowing the use of cast stone panels where steel lintols were initially specified.

Craftstone also helped design and supply the fixing brackets and again achieved significant cost saving for Regal Homes.

To date the project has been awarded the much coveted title of Best Development of Multiple Units at the International Property Awards.

Regal Homes always incorporates interesting designs with high specifications and this is something which we are currently replicating on the Grand Canal Apartments project.



DOURO STREET TOWER HAMLETS LONDON

The facades of these three family homes and six apartments are inspired by the history of match making in this former industrial area.

The project featured Craftstone's reconstituted Portland Stone (wet cast) framed elements to the terraces and 'fluted' cladding.

Craftstone is very proud to have been involved in engaging with a range of partners and being part of a strategic project to revitalise and regenerate the area. This is one of a wide spectrum of projects in the London area where Craftstone is playing a key role in helping areas transform whilst retaining links to their past history and activities.



BOTANIC STUDIOS BELFAST

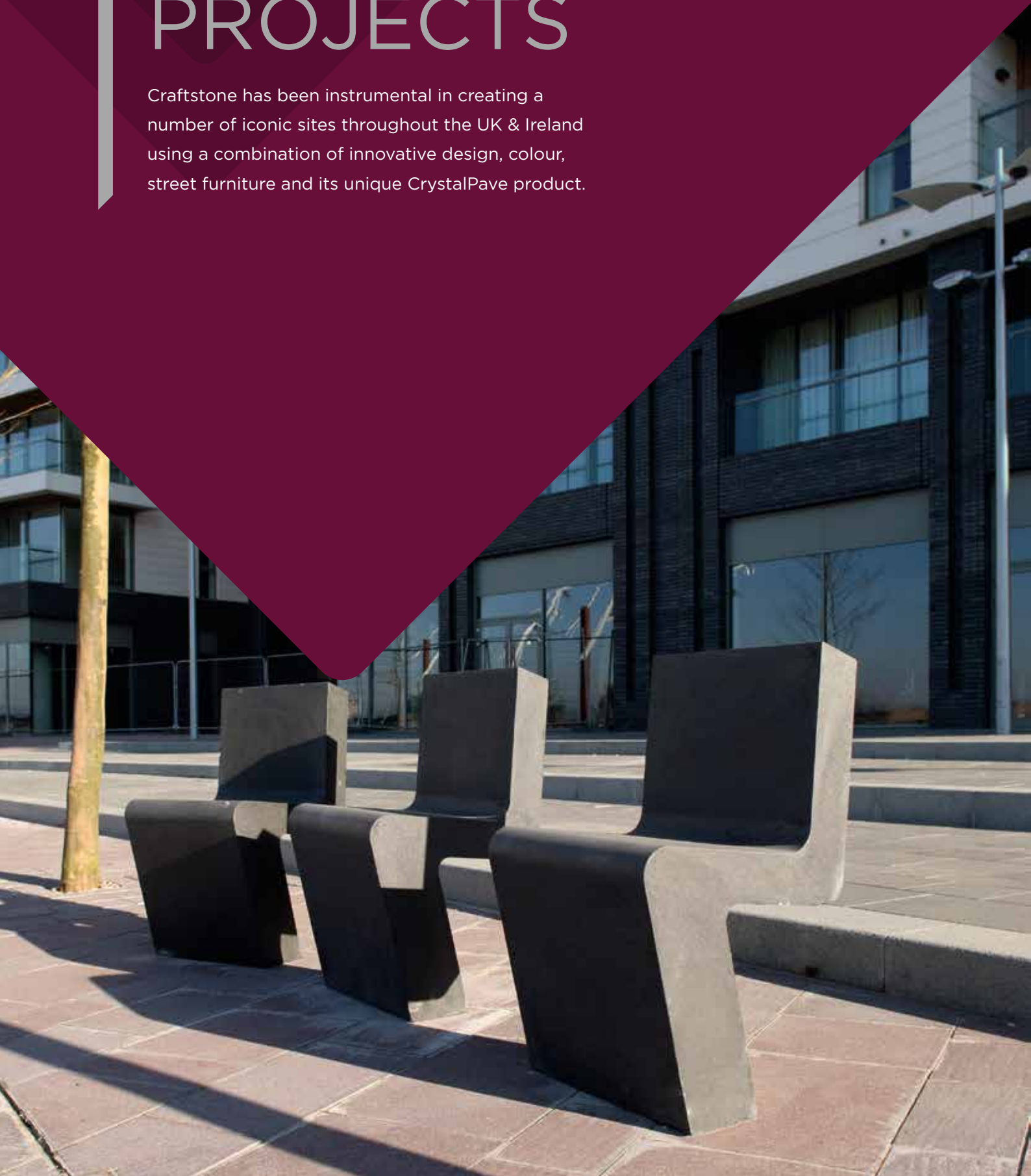
Modern development of innovative Universal Student Living in the heart of Belfast offering students secure, cost effective, 'all-inclusive' accommodation.

Craftstone supplied Reconstituted Portland stone cladding & structural cast-stone beams spanning between the piers. Craftstone is proud to be a key player, working with a range of its partners and Belfast City stakeholders by helping change the face of Belfast to promote city living and contribute to a strategy which is aimed at increasing economic and social activity to re-invigorate the city centre.



LANDSCAPE PROJECTS

Craftstone has been instrumental in creating a number of iconic sites throughout the UK & Ireland using a combination of innovative design, colour, street furniture and its unique CrystalPave product.



TITANIC QUARTER BELFAST

Titanic Quarter, situated on a 185 acre site, is Europe's biggest riverside regeneration project. This is now complete and includes apartments, a hotel, a riverside entertainment district and a major Titanic themed attraction.

Bespoke hard landscaping products were manufactured by Craftstone for the roof-top apartment gardens and included bench seating in a Portland stone finish and individual black seats in a granite finish.

For the Gateway Office within the development, specialist treads and semi-circular landings were manufactured and supplied in a white precast finish.



GRAND CANAL QUAY DUBLIN

The remit of this project for the landscape areas was for something dramatic, bright and creative. With this in mind the DDA turned to Martha Schwartz Partners in Cambridge Massachusetts who selected a concept known as 'Cracked Glass'. Craftstone was approached about manufacturing CrystalPave, a resin bonded coloured glass product that sparkles in the sunlight. After producing a number of samples, the client settled on a combination of red and green paving slabs.

Two swaths of red and green intersect across the site but the real drama comes from the red carpet which leads from a pontoon in the dock up to the projected entrance of the new theatre. Where the red carpet floats above the water, recessed floodlights beneath the floating dock extension create a glowing red halo to the surface of the water, thus reinforcing the floating concept. The end result is space that is bold in design, aesthetically pleasing and a desirable place to inhabit.



FAITH SCHOOL GLASGOW

Local authority East Renfrewshire Council delivered a £17 million joint campus to provide an unique and innovative new facility which was designed and specifically built with the sole aim of welcoming pupils of both Catholic and Jewish faiths under one roof namely St Clare's Primary and Calderwood Lodge, and a non-denominational nursery class.

The children now get to share the same flexible meeting spaces which include the external landscaped areas. The new facilities formed part of a wider multi-million pound investment in the council's school estate to improve services for its youngest residents and communities.



The project also featured elements of creative Artscape including a yellow, blue and red with Craftstone's CrystalPave embedded concrete wall. Hardscape created entirely bespoke moulds for the CrystalPave units to be manufactured to fit into the very colourful concrete walls!

Craftstone's CrystalPave Feature was embedded into the precast panels.



STATION SQUARE, PORTRUSH

As a specialist in manufacturing bespoke hard landscaping products, it was important that Craftstone was involved in the early stages to make recommendations on how best to make the mast to ensure ease of building. A number of samples were produced in specific colours and finishes as requested by the architect and in consultation with F P McCann Ltd of Magherafelt a non-standard buff colour was chosen.

The finished scheme is a vibrant and welcoming space with the feature ships masts standing impressively at one end of the square.



THE ROCK, BURY

The London office of architects BDP worked in close partnership with Craftstone to come up with the colourful paving ribbon feature that has become a trade mark of this project. A full working sample of colours was provided for the client and from this a selection of 7 different colours was chosen.

The ribbon is manufactured as a paving block using Ttutra resin and 85% recycled glass. The exposed glass finish adds vibrant colour and sparkle to the main paving areas.



Our Crystal Products range can be manufactured in a variety of shapes and sizes in almost any colour from a BS or RAL colour chart.



QUALITY AS STANDARD

You will receive the same standard of service from initial enquiry stage right through to completion. Craftstone works closely with its customers to achieve the required result. Samples will be provided for you to choose from and detailed drawings will be produced for your approval.



NOTES

A series of horizontal lines for writing notes. The lines are evenly spaced and extend across the width of the page. In the bottom right corner, there is a decorative geometric pattern consisting of overlapping triangles in shades of gray.



Craftstone

Bespoke Architectural Cast Stone Products

📍 17 Skeltons Road
Banbridge
Co. Down
Northern Ireland
BT32 4HL

☎ +44 (0)28 9269 9777

✉ info@craftstone.co.uk

🌐 www.craftstone.co.uk



*Craftstone™ and CrystalPave™ are registered Trademarks
of Craftstone 2000 Ltd, Banbridge. BT32 4HL*