



07

Craftstone

**The Millennium Theatre Complex, Derry City, County Londonderry**

**Client**  
Derry Theatre Trust

**Contractor**  
J Kennedy & Co  
(Contractors) Ltd

The new 1000 seat Millennium Theatre Complex in Londonderry is situated on a site of great archaeological and historical importance right in the heart of the City. The eastern boundary of the theatre is the eastwall of Derry's well known City Walls.

The cast stone cladding for this project had to be in harmony with the surrounding buildings, in particular the ancient St. Columb's Hall to the east and a cast stone which closely resembles natural York stone was chosen.

1500 square metres, almost 400 of which are curved to two different radii were supplied and fixed by Craftstone. The curved panels for the aptly named Lozenge had to be manufactured to particularly tight tolerances. The result is a magnificent building situated right in the heart of Derry's regenerated walled city.



For more information  
 +44 (0)28 9269 9777  
 info@craftstone.co.uk

# Craftstone

Bespoke architectural cast stone and crystal products created from a lifetime's experience.

Craftstone offers a unique architectural product combined with a high level of service. Whether your design concepts are classical, traditional or contemporary, Craftstone will supply a high quality product, on time and to specification.

## Architectural Cast Stone

- Semi-dry
- Wet-cast
- Structural

## Crystal Products

- Paving
- Walling
- Tiles

## Architectural Grey Precast

## Insulated Precast Panels

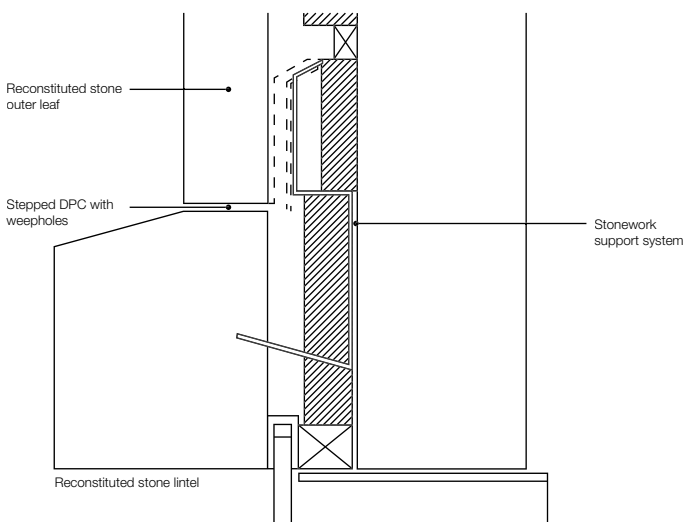
- Brick finish
- Cast stone finish
- Grey precast finish

## Glassfibre Reinforced Concrete

## Bespoke Cast Stone

- Street furniture
- Landscaping features

Elevation of lozenge



## Craftstone 2000 Limited

17 Skelton's Road  
 Banbridge, County Down  
 BT32 4HL  
 Northern Ireland

Tel +44 (0)28 9269 9777  
 Fax +44 (0)28 9269 9577  
 Email info@craftstone.co.uk  
 www.craftstone.co.uk