

# Craftstone

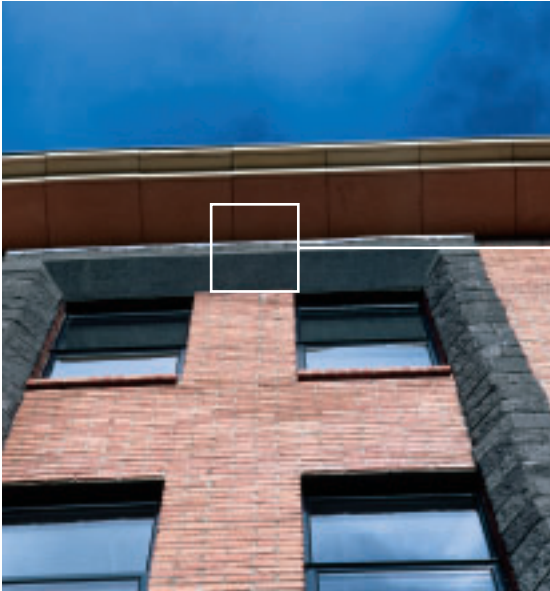


Situated in an area of major redevelopment, this new office development was designed with red brick outer walls combined with cast stone features to complement the brick.

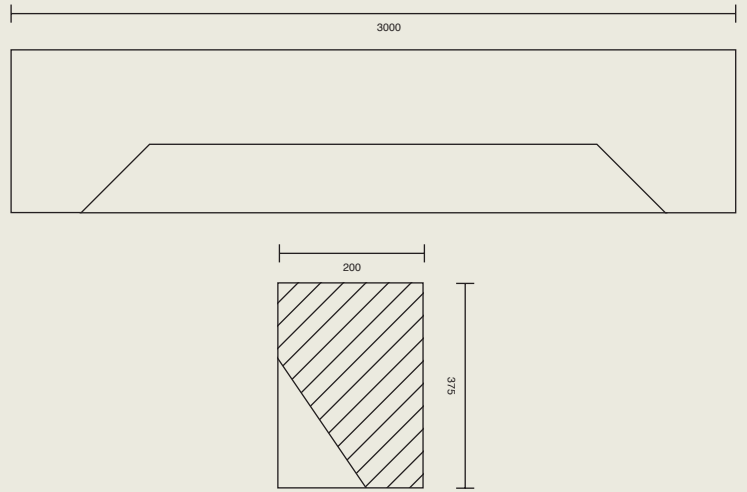
The most prominent cast stone feature is a large overhanging parapet coping with an exposed aggregate finish in a bathstone colour. Craftstone also supplied large black precast lintols above the windows. The parapet coping units had to be heavily reinforced and weigh approximately 800 kgs per metre run.

The combination of different building materials on this project has resulted in an eye catching office development.

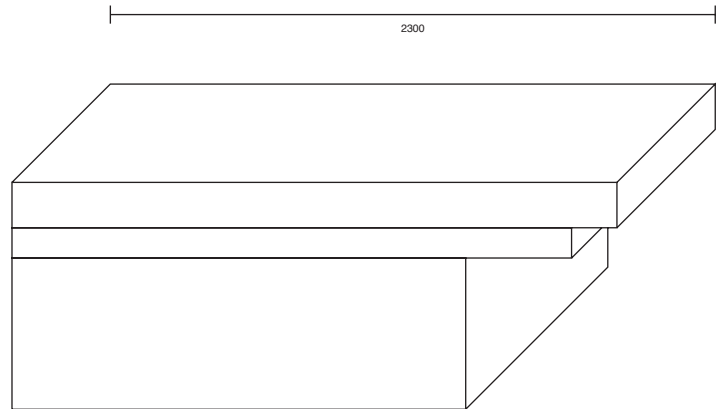
PROJECT	Office Development
LOCATION	145-149 Donegall Pass, Belfast
ARCHITECT	Castleton Design Services
CONTRACTOR	New Quay Developments Limited



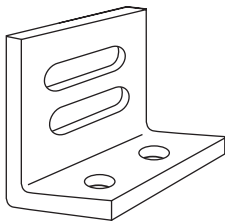
Elevation and section at lintel



Elevation of parapet coping



Stainless steel bracket detail



Section of parapet coping

